

# **Study Group Kick-off Meeting**

**Northside**

**March 2007**

## BeltLine Update

**BeltLine Organization**

**Study Group Overview**

**Goal Setting Work Session**

**Sub-Area Master Planning**



# KEY ELEMENTS OF THE BELTLINE

ATLANTA BELTLINE, INC.



**Parks**  
*~ 1300 new acres*



**Trails**  
*33 miles*



**Transit**  
*22 mile loop*



**Jobs and Econ. Development**  
*20 areas, 30k jobs*



**Workforce Housing**  
*\$240M ~5,600 units*



**Historic Preservation**



**Streetscapes and Transportation Infrastructure**



**Environmental Clean-up**

# FUNDAMENTAL PRINCIPLES 5-YEAR WORK PLAN

**Secure the Right-of-Way (ROW)**

*Preserve continuity of full 22-mile BeltLine ROW*

**Complete critical planning activities early**

*Establish framework for thoughtful build-out of projects*

**Achieve tangible successes within first five years**

*Ensure people can enjoy the use of completed projects early on*

**Strive for geographic balance**

*Balance projects and investments across quadrants*

**Ensure financial feasibility**

*Ensure future TAD bond proceeds are sufficient to fund project components*

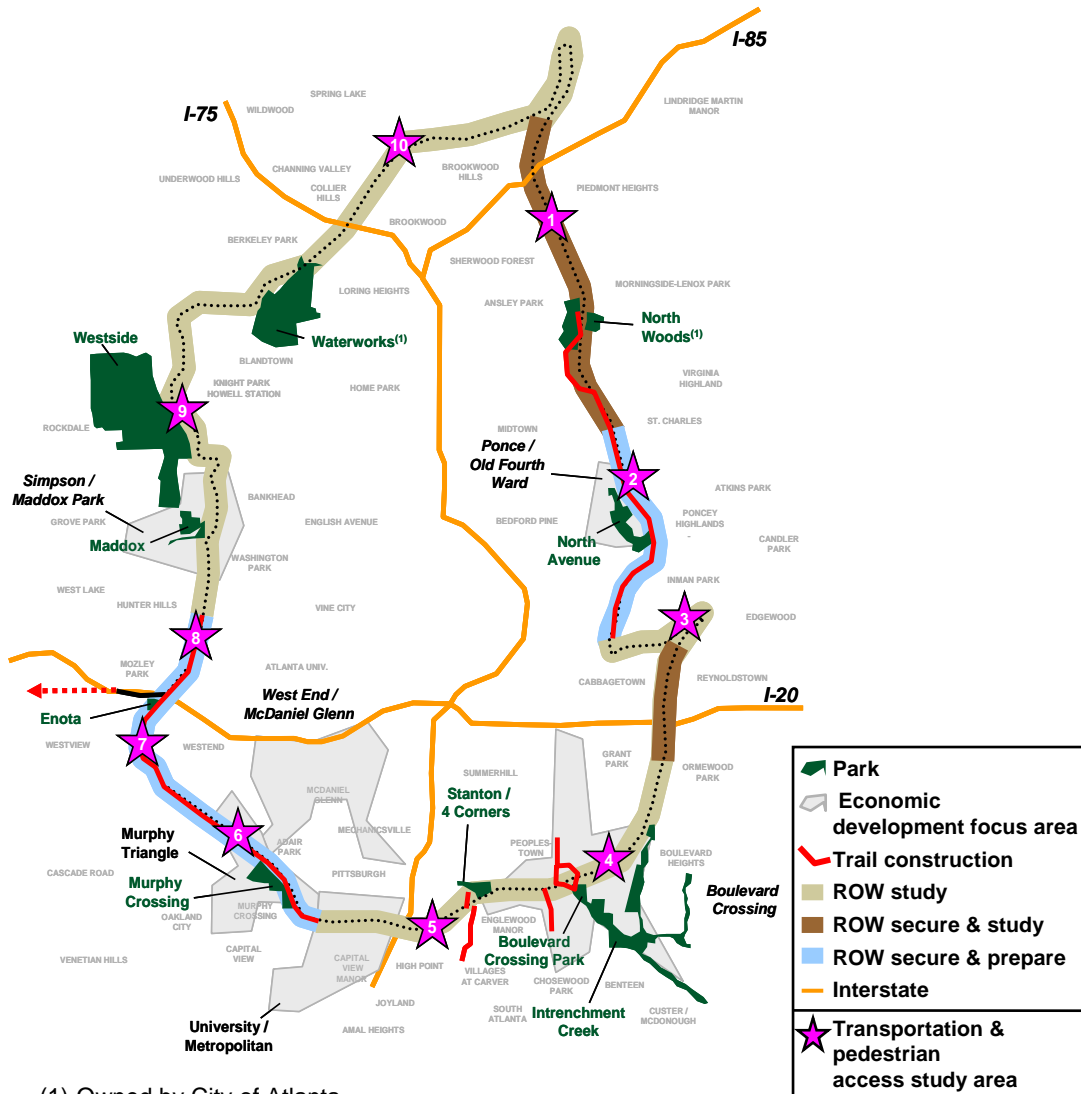
**Maintain strategic reserve for unforeseen opportunities**

*Be ready to act quickly to make necessary investments*



# OVERVIEW OF PROJECTS IN THE 5-YEAR DETAILED VISION

# ATLANTA BELTLINE, INC.



## Projects in first five years

- 1 Growing greenspace with parks and trails
  - 585-625 acres of greenspace acquired with 260-300 acres developed
    - 480-490 acres of parks acquired with 155-165 acres developed
    - 5-7 miles / 90-100 acres of trails and 5-9 miles / 15-35 acres of spurs acquired and developed
- 2 Transforming transit
  - Complete all studies required to begin transit construction
  - Secure available Right-of-Way
  - Prepare 5-7 miles of Right-of-Way for transit
- 3 Ensuring livable communities and attractive business climate
  - ~\$42M invested in new affordable workforce housing units
  - Targeted economic development spending in 6 focus areas
  - Road and streetscape investment for transportation and pedestrian access study areas
  - Complete street grid, land-use plan, zoning, master planning and connectivity studies
  - Complete environmental and historic assessments
  - Incorporate public art

(1) Owned by City of Atlanta

Note: All park acres are shown, but only partial amounts may be acquired in first five years

- **BeltLine Tax Allocation District created to provide \$1.7B over 25 years (11-12/2005)**
- **5-Year \$427M work plan approved by City Council (7/2006)**
- **Extensive community engagement undertaken (12,000+ residents) and participation processes underway (Ongoing)**
- **Implementation entity operational and core teams are in place (9/2006)**
- **MARTA Board approved BeltLine loop and rail-based transit solution as LPA (1/8/2007)**

- **BeltLine TAD Bonds Validated (1/23/07)**
- **Five-Year Work Plan Progress Continues with -**
  - Over 180 acres of greenspace and trails acquired, including 138-acre Bellwood Quarry.
  - Key foundational transportation and transit studies set to commence
  - \$1.6B in new development activity (50 projects) underway in BeltLine TAD
  - CDP Amendment and BeltLine Zoning Overlay district
- **Private Capital Campaign Now Underway**
  - \$60M Capital Campaign goal.

**BeltLine Update**

**BeltLine Organization**

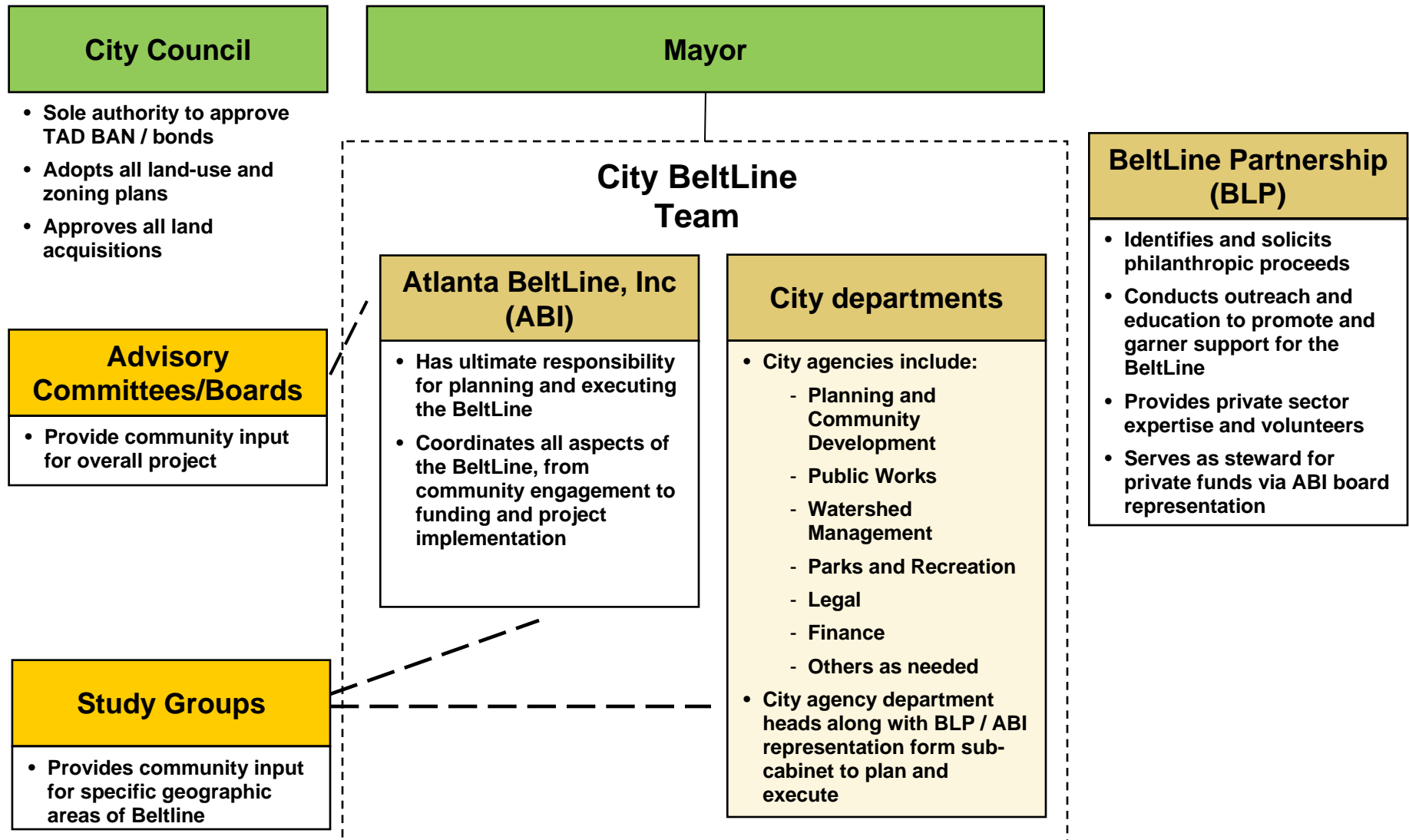
**Study Group Overview**

**Goal Setting Work Session**

**Sub-Area Master Planning**

# CITY BELTLINE TEAM RESPONSIBLE FOR PLANNING AND IMPLEMENTATION

# ATLANTA BELTLINE, INC.



**Comprehensive engagement efforts continue including:**

- **BeltLine Study Groups**
- **BeltLine TAD Advisory Committee**
- **Community Representative on ABI Board of Directors**
  - **Liz Coyle, City Council appointment**
- **Citizen Participation Advocate**
  - **Recruitment underway**
- **Quarterly City-wide Briefings**
  - **April 13**
  - **August 9**
  - **October 11**

**Legislation sets framework for initiating and structuring Study Groups**

- **Primary public involvement mechanism for BeltLine planning and implementation activities**
- **Initiated by Bureau of Planning and ABI**
- **3 key tasks for the study groups:**
  - **To develop a vision statement**
  - **To define community benefits principals**
  - **To participate in master planning activities**



**BeltLine Planning Units from the legislation have been renamed BeltLine Study Groups to avoid confusion with Neighborhood Planning Units**

**BeltLine Update**

**BeltLine Organization**

**Study Group Overview**

**Goal Setting Work Session**

**Sub-Area Master Planning**

# **STUDY GROUP STRUCTURE:**

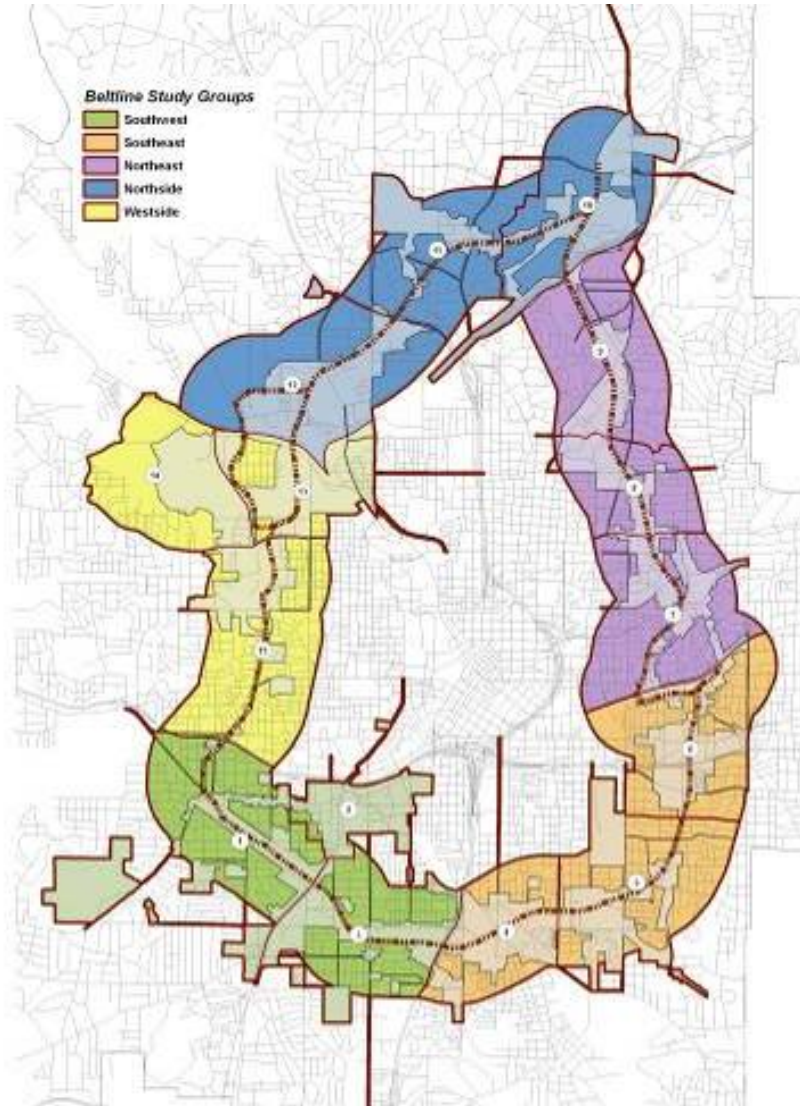
## **Overview**

**ATLANTA BELTLINE, INC.**

### **Study Groups focus attention on a specific geographic district (Beltline Segment)**

- **Recommended by APAB and BeltLine Network to provide focused geographic-based input**
- **Long-term participants in planning and implementation**
- **Open to all members of the community**

# STUDY GROUPS BOUNDARIES: NEIGHBORHOOD-BASED



## 5 Study Groups Cover the BeltLine Corridor

Transit and Trail Options

Development Areas

Parks

Adjacent Neighborhoods and  
Business Districts

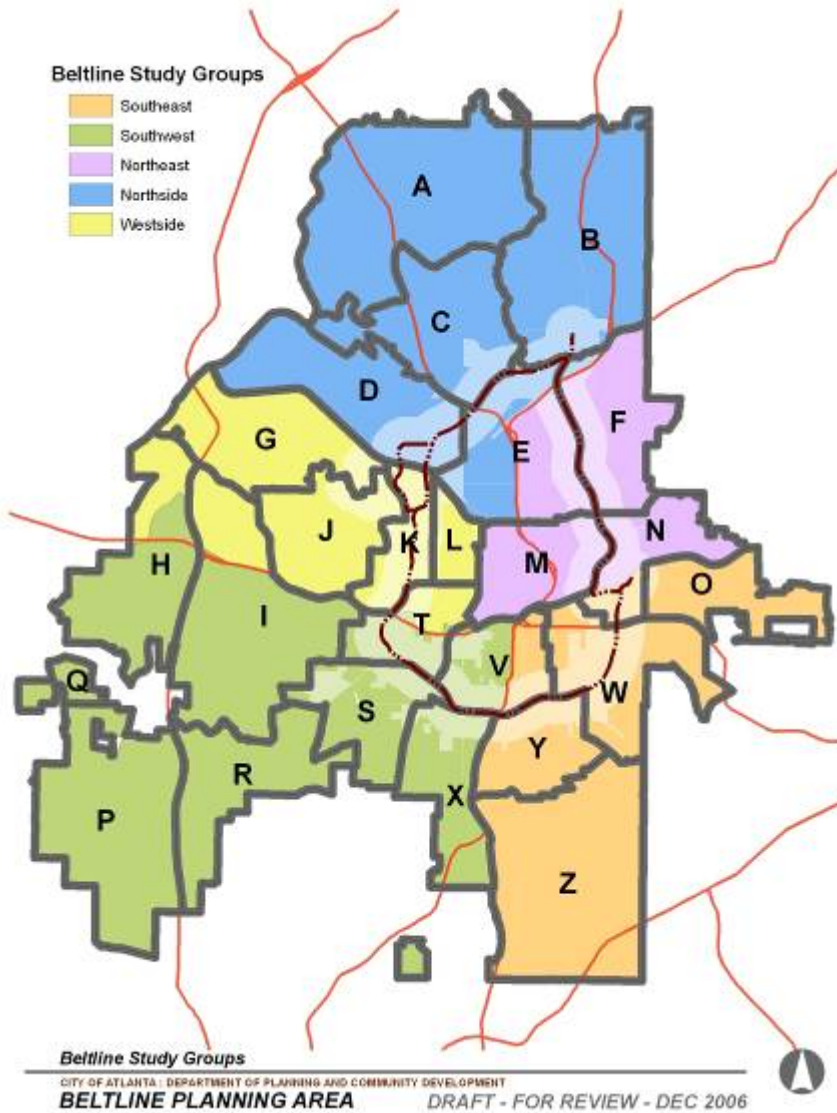
# STUDY GROUP STRUCTURE: PARTICIPATION

ATLANTA BELTLINE, INC.

The BeltLine Study Groups open to all members of the community

- Participation from broad range of stakeholder groups and community organizations for full representation
- Neighborhoods within two study group areas may desire to participate in both study groups





## Study Groups Provide NPUs Chance for Comprehensive Input

Integrated corridor-level view

In depth discussions

NPUs participate in at least one study group

NPU liaisons are two-way communications link

### **Initiating Study Groups -**

- **Create a vision statement for the BeltLine area that it represents**
- **Develop a set of community benefit principles**
- **Reach out to community members who may not be aware of the Study Groups**
- **Provide input into a range of topics regarding the BeltLine, such as master planning, and affordable housing and transportation.**
- **Do not substitute for NPU review of land use and zoning**

# STUDY GROUP STRUCTURE:

Organization

ATLANTA BELTLINE, INC.

Study groups will organize themselves by appointing volunteer coordinator(s)

- Meeting Coordinator will serve as the point person for scheduling meetings and communicating with the City BeltLine Team.



---

**The BeltLine Team will drive planning and implementation -**

- **Gather input and comments from Study Groups and Steering Committees**
- **Review input with technical and subject area experts**
- **Provide feedback to Study Groups on how input was used in the process**

**BeltLine Update**

**BeltLine Organization**

**Study Group Overview**

**Goal Setting Work Session**

**Sub-Area Master Planning**

**BeltLine Activities Update**

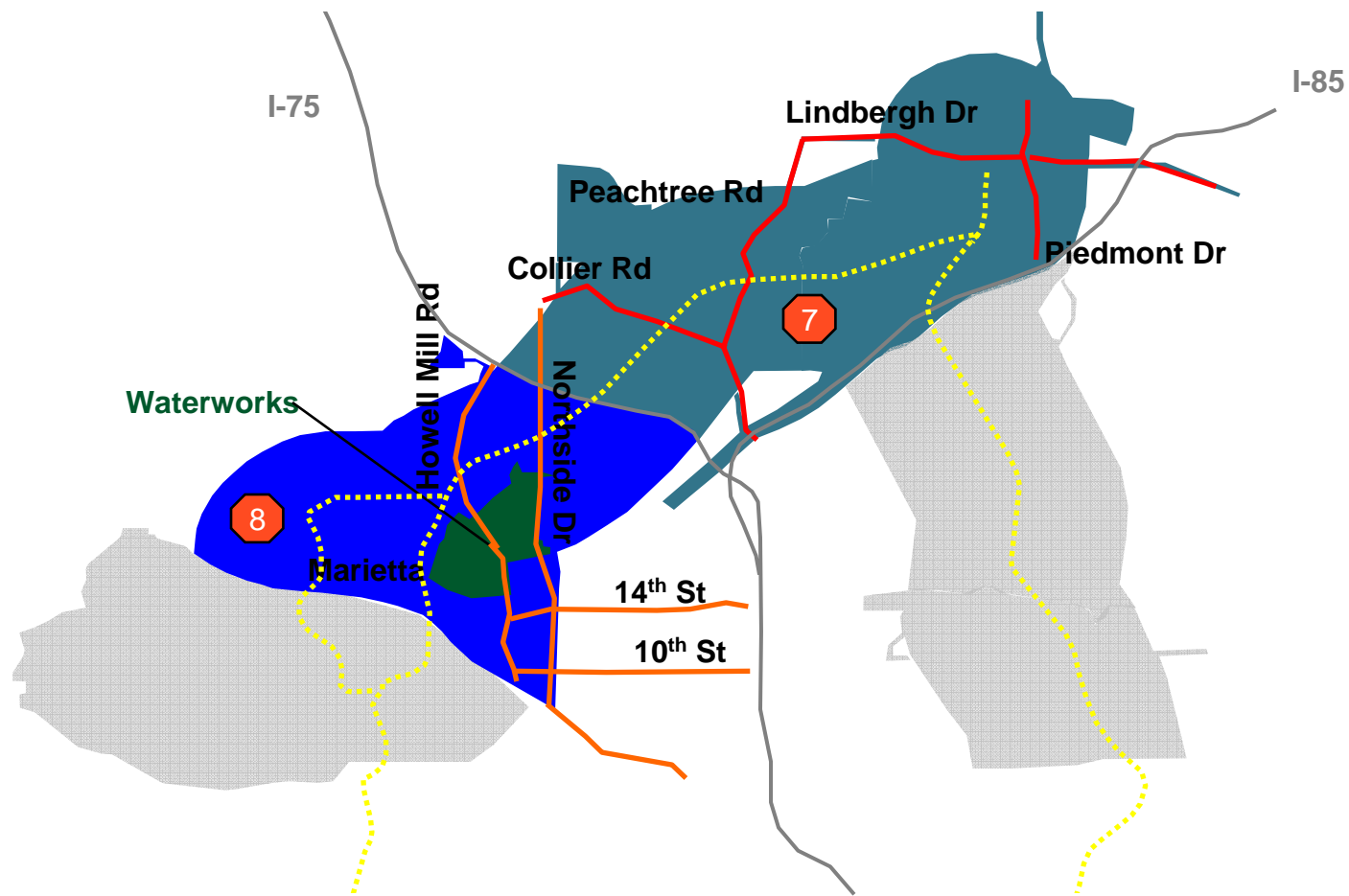
**BeltLine Organization**

**Study Group Overview**

**Sub-Area Master Planning**

# Northside Sub-Area Planning Sub-Areas 7 and 8

Northside Sub-Area Boundaries run from near Marietta Blvd.  
to east of Piedmont Drive



---

**The BeltLine Team will conduct integrated studies to lay foundation for implementation**

- **Transportation connectivity and infrastructure needs for all modes**
- **Confirmation of land use – based on BeltLine Redevelopment Plan and small area plans**
- **Park master planning**

- **Provide NPU liaison designations to Nathan Conable, ABI**
- **Get the word out about study groups to community organizations and stakeholder groups**
- **Sub-Area Master Planning session with Study Group to be scheduled in May/June**
- **Provide Steering Committee membership recommendations to Brandy Crawford, ABI by April 30**

# **Study Group Kick-off Meeting**

**Northside**

**March 2007**