

Study Group Kick-off Meeting

Westside

March 2006

BeltLine Update

BeltLine Organization

Study Group Overview

Goal Setting Work Session

Sub-Area Master Planning

KEY ELEMENTS OF THE BELTLINE

ATLANTA BELTLINE, INC.



Parks
~ 1300 new acres



Trails
33 miles



Transit
22 mile loop



Jobs and Econ. Development
20 areas, 30k jobs



Workforce Housing
\$240M ~5,600 units



Historic Preservation



Streetscapes and Transportation Infrastructure



Environmental Clean-up

FUNDAMENTAL PRINCIPLES 5-YEAR WORK PLAN

Secure the Right-of-Way (ROW)

Preserve continuity of full 22-mile BeltLine ROW

Complete critical planning activities early

Establish framework for thoughtful build-out of projects

Achieve tangible successes within first five years

Ensure people can enjoy the use of completed projects early on

Strive for geographic balance

Balance projects and investments across quadrants

Ensure financial feasibility

Ensure future TAD bond proceeds are sufficient to fund project components

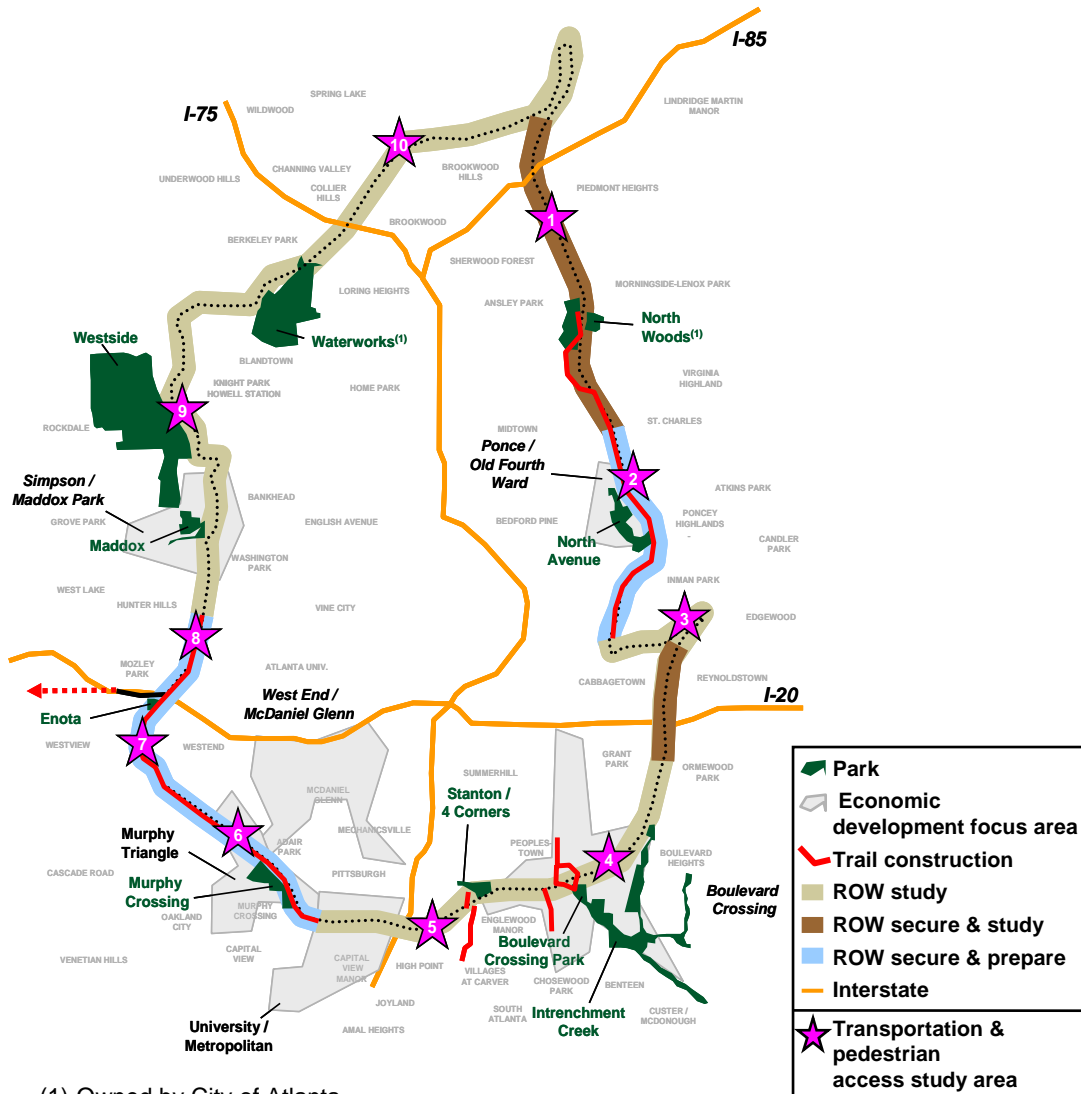
Maintain strategic reserve for unforeseen opportunities

Be ready to act quickly to make necessary investments



OVERVIEW OF PROJECTS IN THE 5-YEAR DETAILED VISION

ATLANTA BELTLINE, INC.



Projects in first five years

- 1 Growing greenspace with parks and trails
 - 585-625 acres of greenspace acquired with 260-300 acres developed
 - 480-490 acres of parks acquired with 155-165 acres developed
 - 5-7 miles / 90-100 acres of trails and 5-9 miles / 15-35 acres of spurs acquired and developed
- 2 Transforming transit
 - Complete all studies required to begin transit construction
 - Secure available Right-of-Way
 - Prepare 5-7 miles of Right-of-Way for transit
- 3 Ensuring livable communities and attractive business climate
 - ~\$42M invested in new affordable workforce housing units
 - Targeted economic development spending in 6 focus areas
 - Road and streetscape investment for transportation and pedestrian access study areas
 - Complete street grid, land-use plan, zoning, master planning and connectivity studies
 - Complete environmental and historic assessments
 - Incorporate public art

(1) Owned by City of Atlanta

Note: All park acres are shown, but only partial amounts may be acquired in first five years

- **BeltLine Tax Allocation District created to provide \$1.7B over 25 years (11-12/2005)**
- **5-Year \$427M work plan approved by City Council (7/2006)**
- **Extensive community engagement undertaken (12,000+ residents) and participation processes underway (Ongoing)**
- **Implementation entity operational and core teams are in place (9/2006)**
- **MARTA Board approved BeltLine loop and rail-based transit solution as LPA (1/8/2007)**

- **BeltLine TAD Bonds Validated (1/23/07)**
- **Five-Year Work Plan Progress Continues with -**
 - Over 180 acres of greenspace and trails acquired, including 138-acre Bellwood Quarry.
 - Key foundational transportation and transit studies set to commence
 - \$1.6B in new development activity (50 projects) underway in BeltLine TAD
 - CDP Amendment and BeltLine Zoning Overlay district
- **Private Capital Campaign Now Underway**
 - \$60M Capital Campaign goal.

BeltLine Update

BeltLine Organization

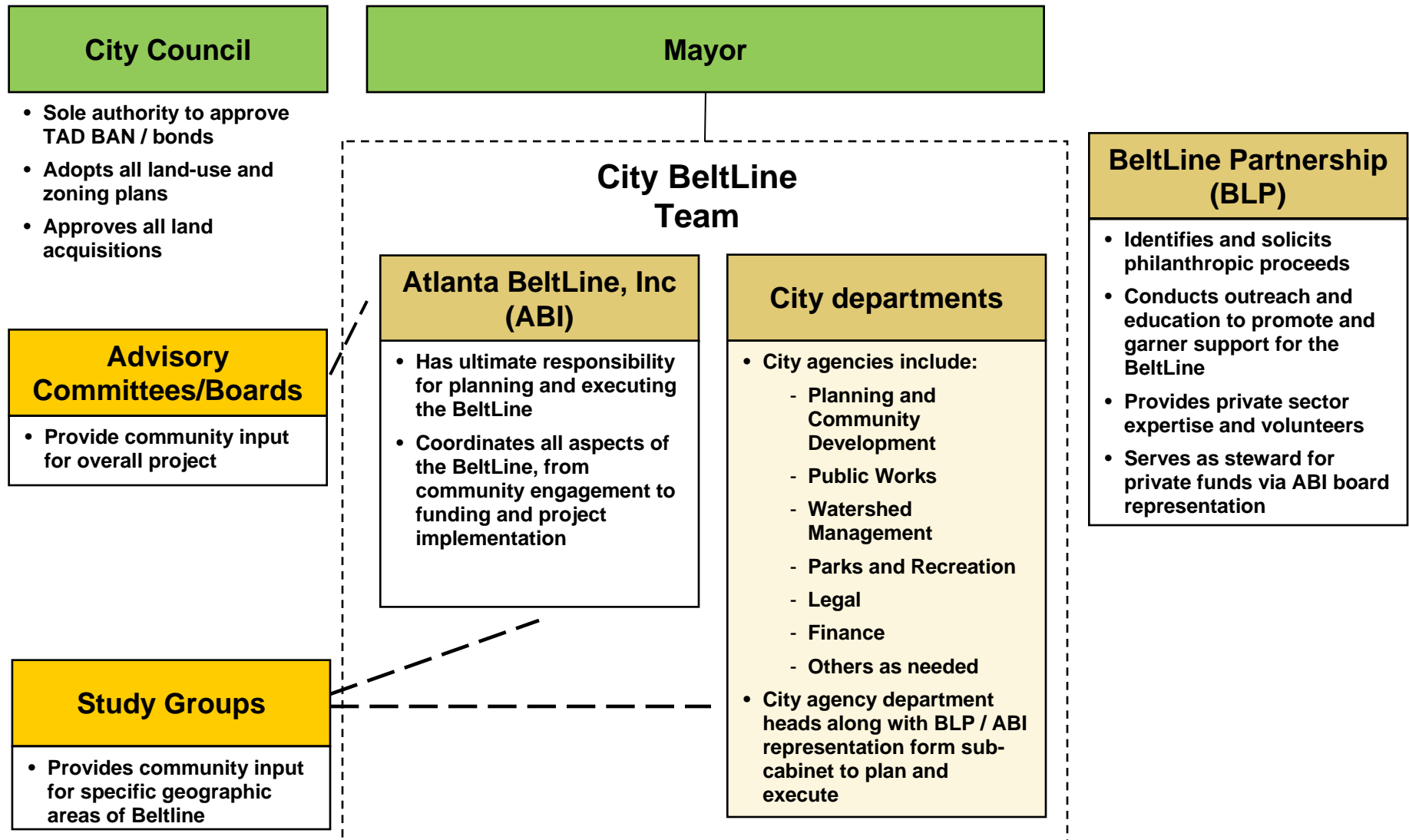
Study Group Overview

Goal Setting Work Session

Sub-Area Master Planning

CITY BELTLINE TEAM RESPONSIBLE FOR PLANNING AND IMPLEMENTATION

ATLANTA BELTLINE, INC.



Comprehensive engagement efforts continue including:

- **BeltLine Study Groups**
- **BeltLine TAD Advisory Committee**
- **Community Representative on ABI Board of Directors**
 - **Liz Coyle, City Council appointment**
- **Citizen Participation Advocate**
 - **Recruitment underway**
- **Quarterly City-wide Briefings**
 - **April 13**
 - **August 9**
 - **October 11**

Legislation sets framework for initiating and structuring Study Groups

- **Primary public involvement mechanism for BeltLine planning and implementation activities**
- **Initiated by Bureau of Planning and ABI**
- **3 key tasks for the study groups:**
 - **To develop a vision statement**
 - **To define community benefits principals**
 - **To participate in master planning activities**



BeltLine Planning Units from the legislation have been renamed BeltLine Study Groups to avoid confusion with Neighborhood Planning Units

BeltLine Update

BeltLine Organization

Study Group Overview

Goal Setting Work Session

Sub-Area Master Planning

STUDY GROUP STRUCTURE:

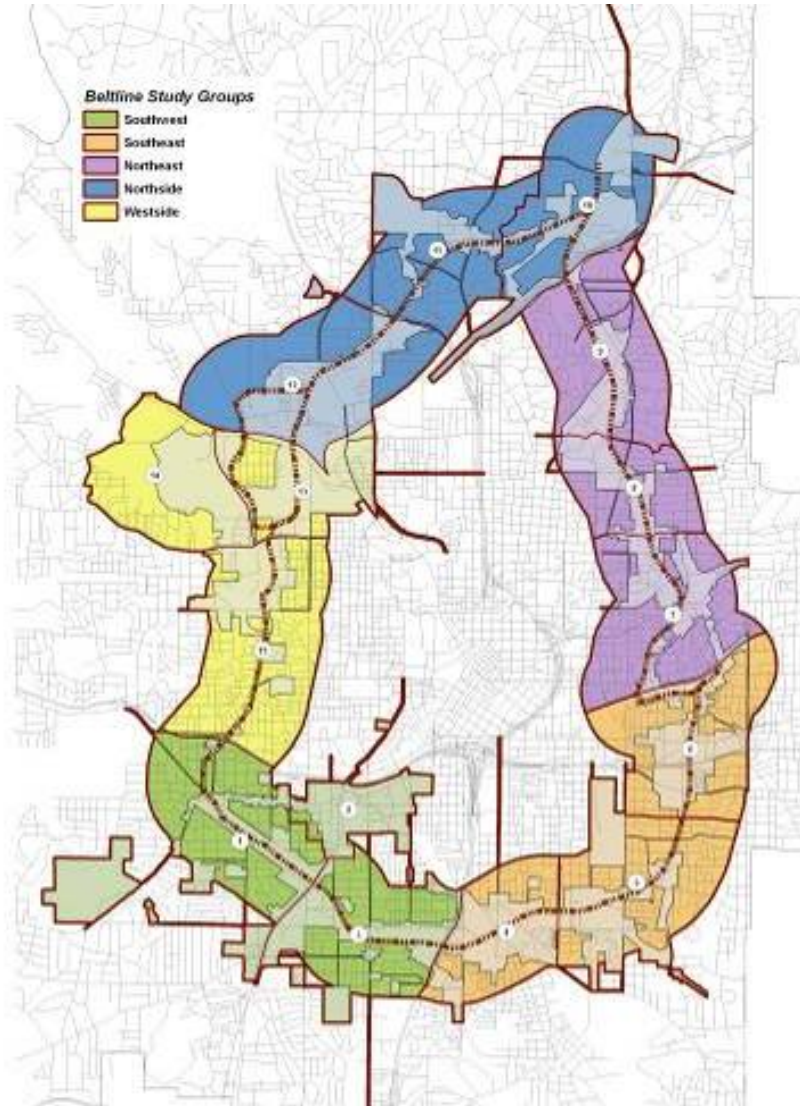
Overview

ATLANTA BELTLINE, INC.

Study Groups focus attention on a specific geographic district (Beltline Segment)

- Recommended by APAB and BeltLine Network to provide focused geographic-based input
- Long-term participants in planning and implementation
- Open to all members of the community

STUDY GROUPS BOUNDARIES: NEIGHBORHOOD-BASED



5 Study Groups Cover the BeltLine Corridor

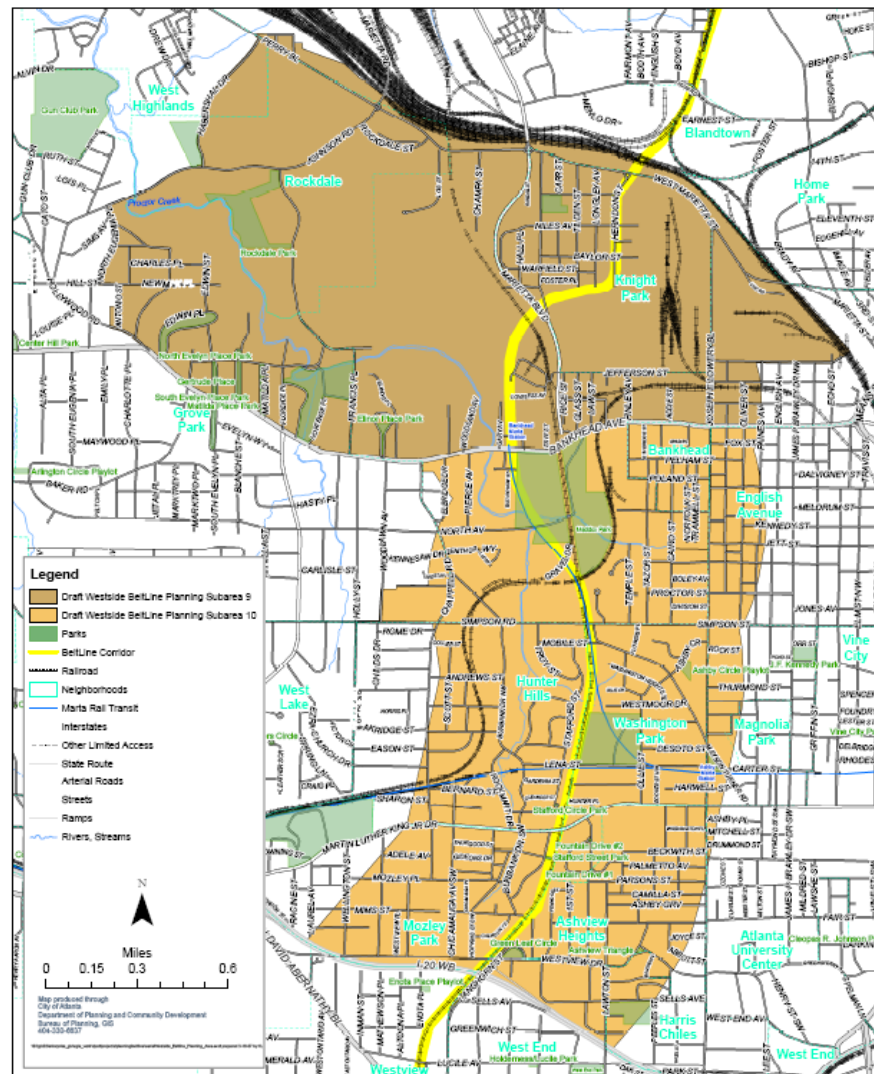
Transit and Trail Options

Development Areas

Parks

Adjacent Neighborhoods and
Business Districts

City of Atlanta Draft Westside BeltLine Planning Area



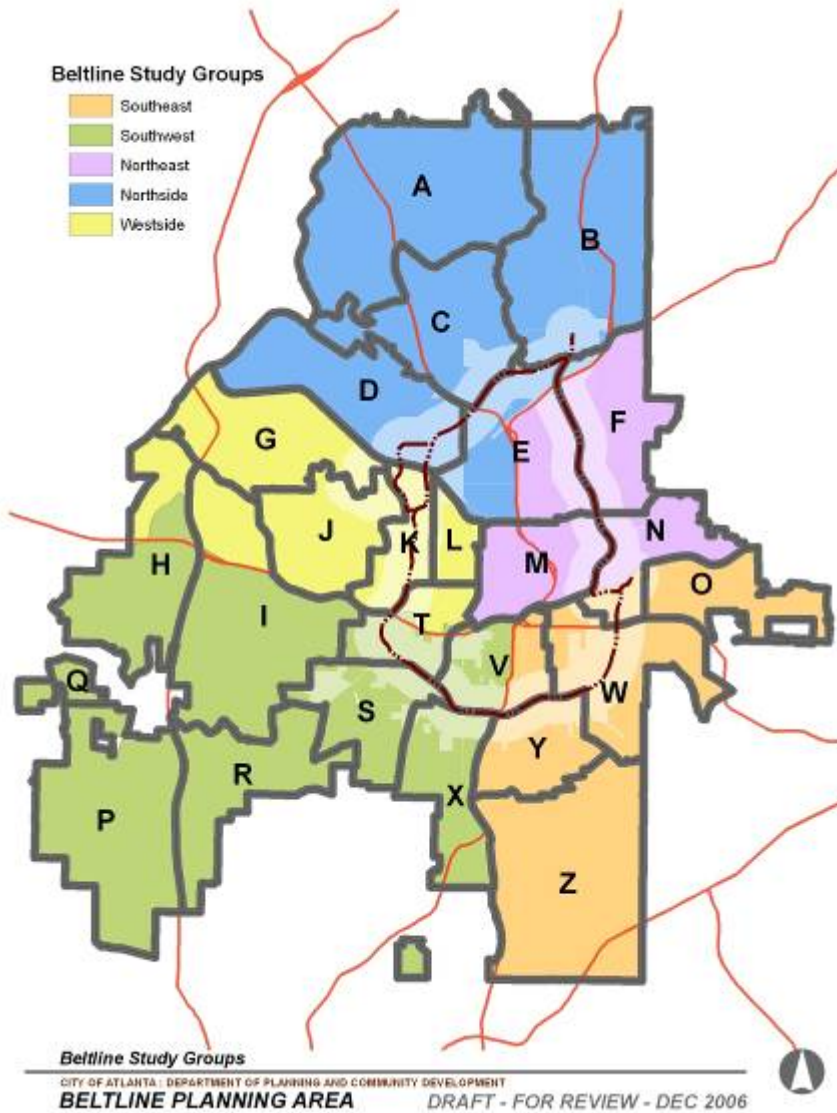
STUDY GROUP STRUCTURE: PARTICIPATION

ATLANTA BELTLINE, INC.

Study Groups open to all members of the community

- Participation from broad range of stakeholder groups and community organizations for full representation
- Neighborhoods within two study group areas may desire to participate in both study groups





Study Groups Provide NPUs Chance for Comprehensive Input

Integrated corridor-level view

In depth discussions

NPUs participate in at least one study group

NPU liaisons are two-way communications link

Initiating Study Groups -

- **Create a vision statement for the BeltLine area that it represents**
- **Develop a set of community benefit principles**
- **Reach out to community members who may not be aware of the Study Groups**
- **Provide input into a range of topics regarding the BeltLine, such as master planning, and affordable housing and transportation.**
- **Do not substitute for NPU review of land use and zoning**

STUDY GROUP STRUCTURE:

Organization

ATLANTA BELTLINE, INC.

Study groups will organize themselves by appointing volunteer coordinator(s)

- **Meeting Coordinator will serve as the point person for scheduling meetings and communicating with the City BeltLine Team.**



The BeltLine Team will drive planning and implementation -

- **Gather input and comments from Study Groups and Steering Committees**
- **Review input with technical and subject area experts**
- **Provide feedback to Study Groups on how input was used in the process**

BeltLine Update

BeltLine Organization

Study Group Overview

Goal Setting Work Session

Sub-Area Master Planning

BeltLine Activities Update

BeltLine Organization

Study Group Overview

Goal Setting Work Session

Sub-Area Master Planning

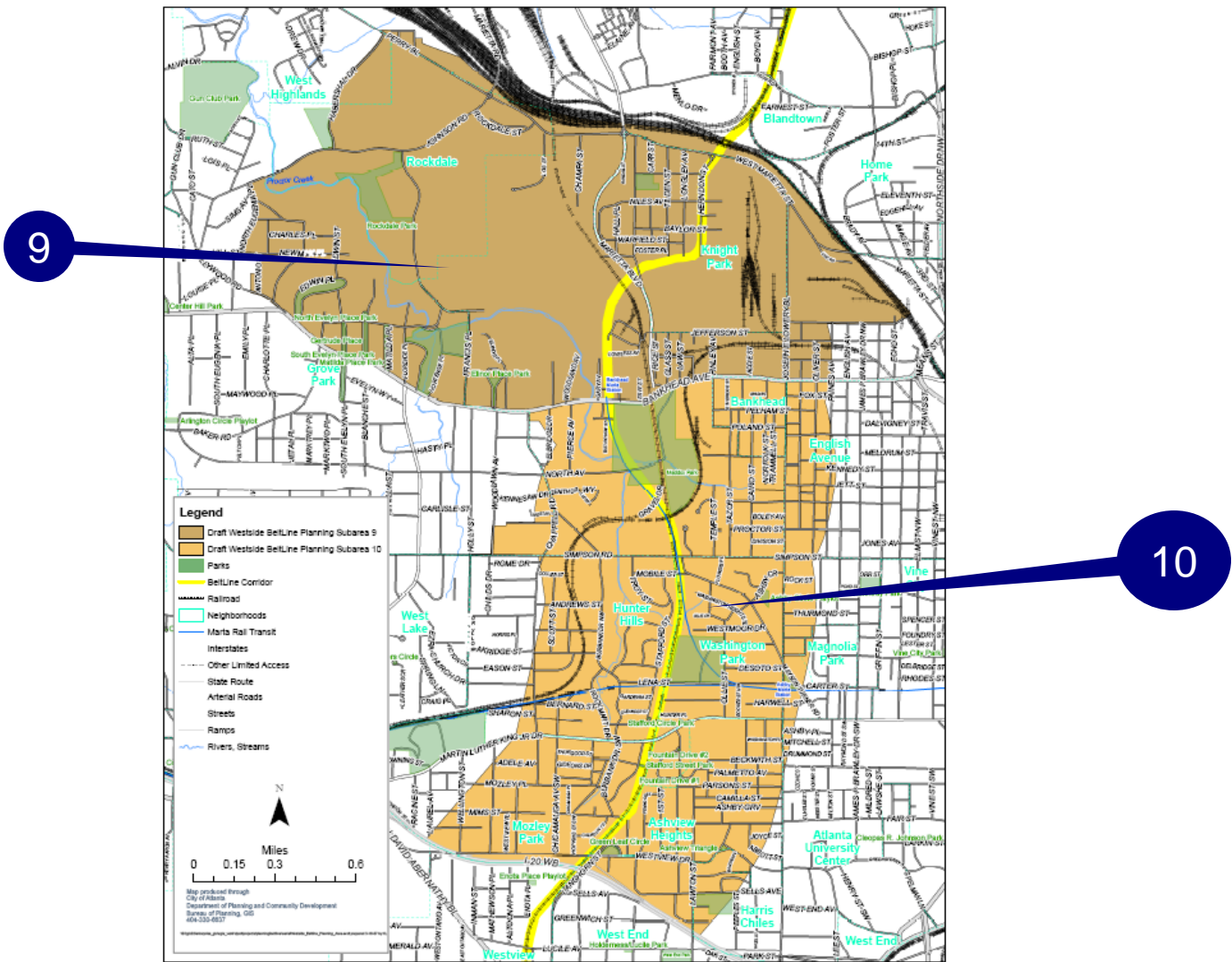
The BeltLine Team will conduct integrated studies to lay foundation for implementation

- **Transportation connectivity and infrastructure needs for all modes**
- **Confirmation of land use – based on BeltLine Redevelopment Plan and small area plans**
- **Park master planning**

Westside Sub-Area Master Planning

Sub-Areas 9 and 10

City of Atlanta
Draft Westside BeltLine Planning Area



Sub-Area 9, Upper Marietta Street/Westside Park

- Land Use and Circulation Plan
- Westside Park Master Plan including new roads and pedestrian connections
- DL Hollowell/Marietta Blvd./Marietta St. Corridors
- BeltLine Street Framework Plan Modifications

Sub- Area 10, Simpson/Hollowell

- Land Use and Circulation Plan
- Maddox Park Planning
- Lowery Corridor
- BeltLine Street Framework Plan Modifications

- **Provide NPU liaison designations to Nathan Conable**
 - nconable@atlbeltline.org
 - (404) 614-8315
- **Get the word out about study groups to community organizations and stakeholder groups**
- **Sub-Area Master Planning session with Study Group to be scheduled in May/June**
- **Provide Steering Committee membership recommendations to Brandy Crawford**
 - bcrawford@atlbeltline.org
 - (404) 614-8314

Study Group Kick-off Meeting

Westside

March 2006